

By Madhuri Shekar
Directed by Aneesha Kudtarkar

This inaugural production of the NAATCO National Partnership Project (NNPP) comes to New York City directly from Long Wharf Theatre in New Haven, CT, the first theatre to bring this initiative to life. The NNPP establishes rigorous relationships with theatres around the country to ingrain strategies for the inclusion of Asian American theatre artists, technicians, and administrators in our partners' practices.

On American stages today, a spotlight shines on "inclusion and belonging." Yet despite an ever-growing national movement among Asian American theatre artists and companies to establish strong, sustainable communities, Asian Americans remain on the margins of this light. Those margins are narrow, and Asian Americans continue to be represented in stereotypic and formulaic ways.

From its inception, NAATCO has been dedicated to fundamentally changing this dynamic. We invite partners to join our efforts for more expansive representations of Asian Americans. Together, we can augment and fortify these efforts to reflect onstage the multiplicity of cultures, races, and ethnicities that defines this country and keeps our theatre vital. In partnership, we can change the world!

ART/NY Mezzanine Theatre
June 10 – July 1, 2022

World Premiere of Queen produced by Victory Gardens Theater, Chicago, Illinois;
Chay Yew, Artistic Director, Erica Daniels, Managing Director.

Queen was produced in New York at Astoria Performing Arts Center, Astoria, NY (Jesse Marchese, Executive Director / Dev Bondarin, Artistic Director), directed by J. Mehr Kaur in February 2019. Developed by Victory Gardens Theater, Chicago, Illinois, Chay Yew, Artistic Director, Chris Mannelli, Managing Director, as part of Ignition 2015.

Queen was developed in The Blank Theatre's Living Room Series (Daniel Henning, Founding Artistic Director) in Hollywood, CA.

Queen received developmental support at the Hedgebrook Women Playwrights Festival, Whidbey Island.

Queen is presented by arrangement with Concord Theatricals on behalf of Samuel French, Inc. www.concordtheatricals.com

NAATCO (National Asian American Theatre Company, Inc.) is a non-profit tax-deductible 501(c)(3) organization founded by Richard Eng and Mia Katigbak in 1989 to: promote and support Asian American actors, directors, designers, and technicians; actively develop an Asian American audience and encourage Asian Americans to become a significant part of a more diverse audience in American theatre; cultivate in non-Asian Americans an appreciation of Asian American contributions to the development of theatre arts in America today.



Actor-Manager & Co-Founder: Mia Katigbak
Creative Producer: Peter Kim

Board of Directors: Eric Achacoso, Richard Eng,
Mia Katigbak, Lani Kennedy, Suzette Porte, Larry Schafer,
William P. Steele

Our website: www.naatco.org
Web design: Michael Minn

This program is supported, in part, by public funds from the New York City Department of Cultural Affairs in partnership with the City Council and an award from the National Endowment for the Arts. It is also made possible by the New York State Council on the Arts with the support of Governor Andrew Cuomo and the New York State Legislature.



Council on
the Arts



National
Endowment
for the Arts
arts.gov

The support of the following has been invaluable, particularly during the pandemic:

AXE-HOUGHTON
FOUNDATION

The Dorothy Strelsin Foundation



The Lucille Lortel Foundation
Including the Lucille Lortel Theatre and the Lortel Archives

THE
ANDREW W.
MELLON
FOUNDATION

Tiger Baron
Foundation

CAST

Stephanie Janssen.....Ariel Spiegel
Avanthika Srinivasan.....Sanam Shah
Ben LivingstonDr. Philip Hayes
Keshav MoodliarArvind Patel

JUNGHYUN GEORGIA LEE
Scenic Design

YUKI NAKASE LINK
Lighting Design

PHUONG NGUYEN
Costume Design

UPTOWN WORKS
DANIELA HART
NOEL NICHOLS
BAILEY TRIERWELLER
Sound Design

RAN XIA
Associate Director

JACKIE FOX
Assistant Lighting Design

KYLE ARTONE
Assistant Costume Design

DIANE HEALY
Production Stage Manager

TAMAR FRIEDMAN
Assistant Stage Manager

MIKE MROCH
Production Manager &
Technical Director

SUZETTE PORTE
Company Manager

NANCY BULALACAO
Community Outreach

KATE KATIGBAK
Postcard/Poster/Video Design

STEPHANIE YANKWITT, CSA
Casting

DAVID GERSTEN &
ASSOCIATES
Publicity

HANA PARK
Production Assistant/
Box Office Manager

JULIAN HERMANO
House Manager

KARINA COWPERTHWAITHE
Social Media Assistant

All actors and stage managers are members of Actors Equity Association.

Presented as part of the NAATCO National Partnership Project with
Long Wharf Theatre, New Haven, CT
Jacob Padrón, Artistic Director
Kit Ingui, Managing Director

FROM THE DIRECTOR



When this play was originally programmed at Long Wharf, the world looked very different. It was January of 2020 – we weren't all quietly singing "Happy Birthday" to ourselves while washing our hands, I knew very little about bees, and even less about Bayesian statistics. I now know that Bayes's Law describes the probability of an event, based on prior knowledge of conditions that might be related to the event. Seems simple enough, but I think we've all had at least one moment over the last two years where we found ourselves desperately squinting at a graph or chart and asking: what story do these numbers tell us? How reliable are they? And can I actually trust these probabilities separate from my own personal experience?

We rely on honey bees for one-third of the food we consume. They are the primary pollinators for almonds, blueberries, melons, pumpkins, squash, gourds, the list goes on. Scientists have debated for decades the vulnerability of the species, but the fact remains that the loss of the honey bee would be catastrophic for the human race.

When we first meet Sanam and Ariel, two Ph.D. candidates at UC Santa Cruz, they think they've solved Colony Collapse Disorder and they're riding high. They're about to publish their research in the most respected scientific journal in the country and they're ready to take on Monsanto. However, as their publication deadline looms, it becomes clear that their data is no longer telling a simple story. They're faced with an ethical dilemma.

Over the course of the play, Sanam and Ariel's friendship is tested and pushed to the brink. They come to recognize a simple and radical fact: in a cutthroat academic world that would seek to pit them against each other, they are stronger together than apart.

We humans have done so much damage to the natural world. When I think of the work that lies ahead, we could stand to learn a thing or two from honey bees. They discover, communicate, adapt, and prioritize the survival of their community over the survival of the individual. A worthy lesson indeed.

Aneesha Kudtarkar

THE COMPANY



Stephanie Janssen
Ariel Spiegel



Ben Livingston
Dr. Philip Hayes



Keshav Moodliar
Arvind Patel



Avanthika Srinivasan
Sanam Shah

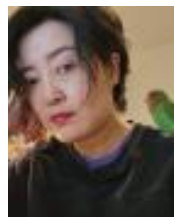
CREATIVE TEAM



Madhuri Shekar
Playwright



Aneesha Kudtarkar
Director



Junghyun Georgia Lee
Scenic Design



Yuki Nakase Link
Lighting Design



Phuong Nguyen
Costume Design



Daniela Hart
Uptown Works
Sound Design



Noel Nichols
Uptown Works
Sound Design



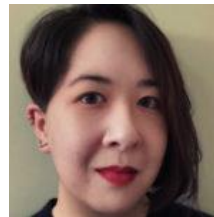
Bailey Trierweller
Uptown Works
Sound Design



Jamie Fox
Assistant Lighting Design



Ran Xia
Associate Director



Kate Katigbak
Graphic/Video Design



Diane Healy
Production Stage Manager



Tamar Friedman
Assistant Stage Manager



Peter Kim
Creative Producer

Biographies

Jackie Fox (Assistant Lighting Designer) is a New York based artist and designer interested in, above all else, telling stories that explore the vulnerability of the human condition and human behavior in the face of conflict. Selected credits include: *Pride and Prejudice* (Wagon Wheel Theatre), *Kiss* (PARA. MAR Dance Theatre), *re: CLICK* (American Music Theatre Project), *Hundred Days* (Kokandy Productions), *Legally Blonde* (Northwestern University), *Machinal* (Northwestern University). For more information about Jackie's work go to jackiefoxdesigns.com

Tamar Friedman (Assistant Stage Manager) is thrilled to be a part of the QUEEN team! Previous: *To My Girls* (Second Stage), *Sonata 1962*, *If Sand Were Stone*, *Play Like A Winner*, *The Goree All-Girl String Band* (NYMF). BA Emerson College. Thanks to Mom, Dad, Zach, and Violet.

Daniela Hart (Sound Designer) is a New York City based sound designer currently pursuing an MFA in Sound Design at the Yale School of Drama. She founded UptownWorks in 2015 and it has developed into a full service production company specializing in telling stories through film and sound production. Daniela enjoys working in a variety of roles from day to day including sound designer, composer, film editor, producer and director.

Julian Hermano (House Manager) is a writer, actor, and comedian that has performed largely in their home of NYC and internationally in Osaka, Japan. They are the co-creator and co-writer of the award winning audio fiction series "The Realm Tree", a story about how fairies get their wings. House managing for NAATCO and *Queen* at A.R.T./NY is a wonderful experience to support the ever prescient and insightful theatrical voices of New York.

Diane Healy (Production Stage Manager) This year: *California* (Clubbed Thumb), *Songs About Trains* (Radical Evolution/WP Theatre), *Selling Kabul* (Playwrights Horizons). Proud member of BEDLAM: *Persuasion*, *The Crucible*, *Sense and Sensibility*, *Saint Joan*, *Hamlet*, *Pygmalion*, *Peter Pan*, *Cry Havoc!*, *Twelfth Night/What You Will*. Other NY: TFANA, Mabou Mines, Primary Stages, Playwrights Realm, Barrow Street Theatre, Atlantic Theatre Co., LCT3, LaMama, The Civilians. Regional: Baltimore Center Stage, McCarter Theatre, Folger Theatre, Long Wharf, Bucks County Playhouse, Shakespeare & Company, Oldcastle Theatre Company. Dance and Theatre with Princeton University and Bard College

Stephanie Janssen (Ariel Spiegel) Broadway: *Death of a Salesman* (dir. Mike Nichols), *Mrs. Warren's Profession*, *A Delicate Balance* (u/s). Off-Broadway/Regional: *Ivanov* (Classic Stage Company), *Clive* (New Group), *PTSD and Beirut Rocks* (Ensemble Studio Theatre), *All the Days* (McCarter), *Nora* (Westport Country Playhouse), *Map of Heaven* (Denver Center), *Absalom* (Actor's Theatre of Louisville). TV/Film: "Succession," "New Amsterdam," "FBI," "The Blacklist," "Mysteries of Laura," "The Good Wife," "Elementary," "Law & Order." B.A. Middlebury College, M.F.A, NYU Tisch Graduate Acting.

Kate Katigbak (Graphic/Video Design) is a writer and graphic designer who has worked with NAATCO on advertising and supplemental graphics since 2009. She holds a PhD in nineteenth century literature from Durham University, and is currently working on her first novel. She lives in Queens with her cat, Pinafore.

Mia Katigbak (Actor-Manager & Co-Founder, NAATCO) Selected NYC: *Out of Time* (NAATCO); *The Headlands* (LCT3); *Henry VI* (NAATCO, St. Clair Bayfield Award); *Trial of the Catonsville Nine* (Transport Group); *Scenes From a Marriage* (NYTW); *Dear Elizabeth* (WP); *Awake and Sing!* (NAATCO, Obie Award). Other NYC: Clubbed Thumb, Public Theater, PlayCo, Ma-Yi, New Group, Foundry, New Georges, Soho Rep, Target Margin. Regional: Long Wharf, Yale Rep, Humana Festival, Two River Theater, Berkeley Rep, Guthrie. 2021 USA Fellow; Special Drama Desk Award 2019; 2017 Fox Foundation Resident Actor Fellowship for Distinguished Achievement; Otto René Castillo Award for Political Theater. BA, Barnard College; MA, Columbia University.

Peter Kim (Creative Producer) For NAATCO company he has produced *Out of Time* at The Public Theater, Caryl Churchill's *What If It Only*, *Henry VI: Shakespeare's Trilogy in Two Parts* (two Drama Desk nominations), *Awake and Sing!* (OBIE Award and Drama League Award nomination), *[Veil Widow Conspiracy]*, *Charles Francis Chan Jr.'s Exotic Oriental Murder Mystery* and *Sagittarius Ponderosa*. He has acted in NAATCO's *Charles Francis Chan...*, *The Seagull*, and *He Who Says Yes/No*, and on Broadway, Off-Broadway, and regional productions. He can currently be seen in the acclaimed, award-winning film, *The Forty-Year-Old Version* (Netflix). Film/TV: Billy Eichner's *BROS* (upcoming), *The Boys Spinoff* (upcoming), *The God Committee*, *Saturday Church* (2017 Tribeca Film Festival Audience Award), *Margin Call*, *Sex and the City*, *Hackers*, *After Forever* (Amazon), "Chicago Med," "Ugly Betty," "Law and Order: Criminal Intent." He is a Steering Committee member of the TONY Award-winning AAPAC (Asian American Performers Action Coalition); Lecturer in Theater at Princeton University; co-creator of the critically acclaimed Off-Broadway comedy, *SIDES: The Fear is Real*. He recently produced Radha Blank's exhibition room for The Costume Institute's *In America: An Anthology of Fashion* at The Metropolitan Museum of Art. He is a recipient of the 2020 Rising Leaders of Color grant from TCG (Theatre Communications Group) and the Lilah Kan Red Socks Award. He holds an MFA from Yale School of Drama and a BFA from New York University.

Aneesha Kudtarkar (Director) is a New York-based theatre artist. Her recent directorial projects include *The Cherry Orchard* (The New School), *The Who and The What* (TheaterWorks Hartford), *Men on Boats* (Southern Methodist University), *[Veil Widow Conspiracy]* (NAATCO), *LOCUSTS*, *Trouble in Mind* (Yale School of Drama), *The Purple Flower* (Yale Cabaret), *Mud* (Hangar Theatre). Aneesha is a graduate of the Yale School of Drama.

Junghyun Georgia Lee (Scenic Designer) is a Korean born NYC-based designer. She has designed for NYTW, Ma-Yi, Public, Soho Rep, The Play Co., Alley Theatre, Hartford Stage, Long Wharf Theatre, Guthrie Theater, Huntington Theatre Company, Indiana Repertory, Syracuse Stage, Alliance and Children's Theatre Company. She is a member of New Neighborhood. MFA, Yale School of Drama. junghyungeorgialeedesign.com

Yuki Nakase Link (Lighting Designer) Previously at Long Wharf Theatre: *Tiny Beautiful Things*. Recent design credits include *Our Town* (Dallas Theater Center), *In A Grove* (Pittsburgh Opera), *When Monica Met Hillary* (Miami New Drama), *Seven Deadly Sins* (NYC and Miami Beach), *The Bridge of San Luis Rey* (Two River Theater). She was born in Tokyo, grew up in Kyoto, Japan and currently lives north of NYC in the woods of Hudson Valley. MFA: NYU. <https://yukinlink.com/>

Ben Livingston (Dr. Philip Hayes) Broadway: *One Man, Two Guvnors*, *The Heiress*, *Mamma Mia!* Off-Broadway: *Our Town* (Barrow Street Theater), *The Library* (The Public). Regional Theaters include: Mark Taper Forum, South Coast Rep., Old Globe San Diego, Oregon Shakespeare Fest., Utah Shakespeare Fest. Select screen credits: *The Post* (Steven Spielberg, dir.), "The Knick" (Cinemax), "Manifest" (NBC), "Invasion" (Apple TV), "Harlem" (Amazon), "The Deuce" (HBO), "Mosaic" (HBO), "Mr. Robot" (USA). Ben lives in New York with Jessica, Evelyn, Vivian, and Lucky, the dog.

Todd London (NAATCO National Partnership Project Counsellor) is an artistic director, educator, gatherer, and theater chronicler. He's the author of two novels, the most recent, *If You See Him, Let Me Know*, and numerous books on the theater, including *This Is Not My Memoir* with Andre Gregory, *An Ideal Theater*, and *The Importance of Staying Earnest*. He spent eighteen years as artistic director of New York's New Dramatists and was the first recipient of Theatre Communications Group's Visionary Leadership Award.

Keshav Moodliar (Arvind Patel) was born in Pune, raised between Bombay and New Delhi, and is based in New York City. He recently graduated with his MFA from The Juilliard School. Last seen Off-Broadway in *Romeo and Juliet*, *Measure for Measure* and *Native Son*. Film and TV credits include "Extrapolations" (Apple TV), *Chicken* (Independent), "SINK SANK SUNK" (mini-series), *In Defense of Civil Society* (Independent), *Untitled Paul Simms Pilot* (FX).

Mike Mroch (Production Manager/Technical Director) is a New York based film & theater producer, director, & scenic designer. He is an Executive Producer of [Future Facing Films](#) and the upcoming [Funny Face Series](#), director of the upcoming short horror film [The Uri](#), & showrunner of the short web series [In The Time Of](#). Select theater credits: *20,000 Leagues Under the Sea* (Strawdog Theatre), *Wingman* (Winner - Best Show), *Alma Baya* (UTC61), *Hurricane Sleep* (The

Box Collective/IATI), *After Miss Julie* (Strawdog Theatre - 2016 Joseph Jefferson Award Nomination), *We're Gonna Die* (Haven Theater). www.mikemroch.com

Phuong Nguyen (pronounced fu-ONG win) (Costume Designer) is a costume designer with backgrounds in East Asian studies and Vietnamese history. Selected theatre credits include *Free Free Free Free* (Exponential Festival); *The Danube*, *Aesop's Fables* (Hangar Theatre); *Salem: Post Mortem* (The Muse Collective); *Fun Home, You Will Get Sick* (Yale School of Drama); *Two Mile Hollow*, *Bodyssey*, *Alma*, *Lenny's Fast Food Kids Gang* (Yale Cabaret). They hold an MFA in Costume Design from Yale School of Drama. Phuongtlnghuyen.com.

Noel Nichols (Sound Design) is a regional Sound Designer and Engineer from Phoenix, Arizona. Select design credits with UptownWorks include *Today is My Birthday*, *Choir Boy* (Yale Repertory Theatre) *First Down* (Noor Theatre), *already there* (Kennedy Center), *Fires in the Mirror* (Baltimore Center Stage & Long Wharf Theatre), *Nightwatch* (Dorset Theatre Festival) and *The Masses are Asses* (Wesleyan CFA). MFA. in Sound Design from Yale School of Drama. NoelNicholsDesign.com

Hana Park (Production Assistant/Box Office Manager) is an actor from Birmingham, AL, and is currently attending The University of Alabama. She is on track to graduate with a B.F.A in Theatre with a concentration in Acting and a B.S in Computer Science with a concentration in Cyber Security. She is excited to be here working for the NAATCO team, and she thanks everyone on *Queen* for welcoming her with open arms.

Suzette Porte (Company Manager) has been a producer, events coordinator, and fundraiser with Ma-Yi Theater Company, Baltimore Centerstage and Tribeca Film Institute. She is a member of NAATCO's Board of Directors, and previously received the Wai Look Award for Outstanding Service to the Arts by the Asian American Arts Alliance. She is a graduate of The University of Michigan.

Madhuri Shekar (Playwright) Award-winning plays include *Dhaba on Devon Avenue* (commissioned by Victory Gardens), *House of Joy* (California Shakespeare Theatre, San Diego Rep), *Queen* (Victory Gardens, APAC), *A Nice Indian Boy* (East West Players, Rasaka Theatre Company, EnActe Arts), and *In Love and Warcraft*, *Antigone*, *Presented by the Girls of St. Catherine's*, and *Bucket of Blessings* all at Alliance Theatre. Madhuri's best-selling audio drama, *Evil Eye*, was released as a feature film on Amazon in 2020. She is a staff-writer on Netflix's "Three-Body Problem." Madhuri is a New Dramatists Resident Playwright.

Avanthika Srinivasan (Sanam Shah) is excited to be making her NY theater debut. She is a recent graduate of A.C.T.'s MFA Acting Program. Recent acting credits include Louka in *Arms and the Man* (dir. by Colman Domingo), India 3 and Daanya in *Testmatch* (A.C.T.'s Strand Theater), and Natasha in *Three Sisters* (A.C.T MFA). Avanthika holds a BA in French and Theater from Princeton University. avanthikasrinivasan.com. This one's for you, Melissa.

Bailey Trierweiler (Sound Design) is a non-binary, East Coast based sound designer, engineer and artist. Bailey works as a Sound Associate with UptownWorks NYC and they are most interested in uplifting marginalized voices and engaging community through thoughtful collaboration and various forms of media. BFA from University of Colorado Boulder, MFA Candidate at Yale School of Drama.

Ran Xia (Associate Director) is a Shanghai-born, Brooklyn-based Playwright/Director/Audiogremlin. Beatrice Terry Resident at the Drama League (2021/22); Resident Director at the Tank (inaugural Artist of the Year 2019, *In Blue*, *Tallest Man in the World*, etc.); Guest director at Barnard (*Orlando*, fall 2021), Montclair State (*Randi & Roxanne*), Commissioned playwright at Vanderbilt University (*To Stab a Butterfly Through the Heart*); Affiliated artist of Exquisite Corpse Co. (*Zoetrope*, *Memory House*, and many more); audio producer at Black Revolutionary Media. An expert rider of trains and an abysmal player of video games. ranxia.info

Stephanie Yankwitt, CSA (tbd casting co.) is thrilled to be working with Long Wharf and NAATCO on this production. Current/Upcoming theatre: *Notes on Killing Seven Oversight*, *Management*, and *Economic stability board members* (Soho Rep), *Here There Are Blueberries* (Tectonic Theater Project @ La Jolla Playhouse) and *Songs About Trains* with Working

Theater/Radical Evolution. Upcoming work outside of theatre includes a series for Disney+ and a feature film with Lexicon Films. Stephanie is a member of the CSA and sits on the Equity in Entertainment Committee.

Long Wharf Theatre: Founded in 1965, Long Wharf Theatre (Jacob G. Padrón, Artistic Director; Kit Ingui, Managing Director) is a Tony Award-winning company of international renown. It was founded on the notion that New Haven deserves an active culture that is locally created, supported by community leaders and patrons of the arts. It is recognized for a historic commitment to commissioning, developing, and producing new plays and musicals that have become a part of the modern American canon. More than 30 of its productions have transferred to Broadway or Off-Broadway runs, three of which—*Wit*, *The Shadow Box*, and *The Gin Game*—won Pulitzer Prizes for Drama. It was among the earliest recipients of the Tony Award for Outstanding Regional Theatre (1978) and its productions have won numerous accolades, including Tony, New York Drama Critics' Circle, and Obie Awards; a Margo Jones Award; and nominations and Connecticut Critics Circle Awards in nearly every category. In 2015, the company received the 50 Years of Achievement in Theatre award from National Corporate Theatre Fund and the Major Award for Outstanding Contributions to New England Theatre, the highest honor from New England Theatre Conference.

QUEEN Show Staff

COVID Compliance Monitor: **Hollyanna Mathews**

Intimacy Coordinator: **Kimiye Corwin**

Wardrobe Supervisor: **Azalea Fairley**

Run Crew: **Jennifer Jerone, Suzanne Soliman**

Master Electricians: **Annie Garrett-Larsen, Dajane Wilson**

Board Programmer: **Travis Wright**

Electrics Crew: **Christina Dragan-Dima, Howard Leuthold, Shane McCarthy, Tim Neggie, Annabelle Lau Hui Qi, Abbey Rinaldi, Jesus Santiago, Persephone Squires, Chaz Stokes, Samantha Weiser**

Board Operator: **TBD**

Scenic Crew: **Robert Dortilus, Malik Francis, Saeng-Fah Graham, Lisa Isaac, Shane McCarthy**

Sound Lead: **Jess Barenzeno**

Sound Crew: **Renata Finamore, Rebecca Satzberg, Chaz Stokes**

Production Assistants: **Jose Carillo, Alexander Rovang, Adrian White**

NAATCO Staff

Actor-Manager & Co-Founder: **Mia Katigbak**

Creative Producer: **Peter Kim**

NAATCO National Partnership Project Counsellor: **Todd London**

Company Manager: **Suzette Porte**

Community Outreach Liaison: **Nancy Bulalacao**



The Actors and Stage Managers employed in this production are members of **Actors' Equity Association** ("Equity"), the union of professional actors and stage managers in the United States. **Equity**, founded in 1913, represents more than 51,000 professional Actors and Stage Managers. Equity fosters the art of live theatre as an essential component of society and advances the careers of its members by negotiating wages, improving working conditions and providing a wide range of benefits, including health and pension plans. Actors' Equity is a member of the [AFL-CIO](#) and is affiliated with [FIA](#), an international organization of performing arts unions.

United Scenic Artists
Local USA 829, IATSE
The Representative Voice of Designers and
Scenic Artists for the Entertainment Industry



NAATCO Donors

NAATCO is fortunate to be having a season after two years of lock-down. We are grateful for the following supporters, who kept us active and creatively nourished throughout this period. This list represents grants and individual donations for the period April 2020 – June 15, 2022.

\$100,000 - \$250,000

New York City Council
NYC Department of
Cultural Affairs

\$50,000 - \$99,999

Dorothy Strelsin Foundation
National Endowment
for the Arts

\$10,000 - \$49,999

Axe Houghton Foundation
Howard Gilman Foundation
Mellon Foundation
NY State Council on the Arts
Tiger Baron

\$5,000 - \$9,999

Asian Women Giving Circle
Lucille Lortel Foundation
Play On Shakespeare

\$1,000 - \$4,999

Janet Abraham (in honor of
Larry Schafer)
Eric Achacoso
Anonymous
Cheng Family Fund
Cindy Cheung
Barbara de Bellis
(In Memory of Greta Minsky)
Ching Gonzalez
Victor and Lucy Kan
Lani Kennedy & Lewis Kwit
Lani Kennedy & Lewis Kwit (In
Memory of Adelaida Reyes)
Judi Komaki
Patricia Kozu
Regina Lara
Jason Ma
Play On! Shakespeare
Adelaida Reyes
Conrad Ricamora
Larry Schafer
Diana Steele
William P. Steele
Wendy vanden Heuvel

\$500 - \$999

Anonymous
Anonymous
Asian American Arts Alliance
Baumol Family Foundation
Jacque Cook
Barbara de Bellis
Jody Falco & Jeffrey Steinman

\$500 - \$999

Fan Fox & Leslie R. Samuel
Foundation (Matching)
Angelina Fiordellisi
David Herskovits
Kim Ima
Daniel K. Isaac
Mimi Lien
Emily Lloyd
Jason Ma
Jon Nakagawa
Suzette Porte
Tree Riders NYC
Bonnie Wong
Gregory Ye

\$100 - \$499

Pacifico Agcaoili, Jr.
Janet Abraham
Pamela Abrahams
Doug Aibel
Olaf Andersen
Annie Baker
Christine Balance
Lily Berman
Susan Bernfield
Andy Bragen
Lisa Brenner
Michael Bulger
Emilya Cachapero
Nilo Cater
Jennifer Galvez Caton
Aysan Celik
Kathleen Chalfant
Tisa Chang
Christopher Chen
Michael Chin
Wai Ching Ho
Norine Chiu
Jorge Ignacio Cortiñas
Raney Cumbow
Ako & Josh Dachs
Barbara de Bellis (In Memory
of Adelaida Reyes)
Wendy Feuer
Anita Fusco
Mel Gionson
Jin Ha
Jessica Hagedorn
Rob Handel
Holly Hyans
Tom Ikeda
Cheryl Ikemiya
Midori Francis Iwama
Paul Juhn
Hansol Jung
\$100 - \$499
Kate Katigbak

Wally Katigbak
Greg Keller
Glenn Kubota
Emily Lloyd (In Memory of
Adelaida Reyes)
Todd London
Lee Lowenfish
William Lynch
Les Mau
Cynthia Mayeda
Carmen Negron
Jorge Ortoll
Gertrudes Pajaron
Andrew Pang
Gregory Pierson
Mark Rossier
Jeanne Sakata &
Timothy Patterson
Ken Rus Schmoll
Barbara Samuels
Patricia Savoie
Larry Schafer (In Memory of
Adelaida Reyes)
Janet Scott
David Shih
Karen Shimakawa
Tamio Spiegel
Lloyd Suh & Jeanie Lee
Daniel Swee
Lucia Vail
Jennifer Wah
Helen Young

Up to \$99

J.B. Barricklo
Roxanne Baisas
Carol E. Baldwin
Michi Barall
Vivian Barnes
Reza Behjat
John Genson
Randi Benton
Austin Kirk Blunk
Jeanine Bushue
Scott Carter
Marina Chan
Jackie Chung
Mia Chung
Jill Cornell
Jack Cumming III
Rita M. Dahl
Theodore J. Dawson
Matthew Dellapina
Helen Joy Dickson
Up to \$99
Michael P. Doyle
Karen Duda
Thomas Dunn

Marcela Espildora
Amanda Feldman
Stephanie Feyne
Gia Forakis
Benjamin Gassman
Madeleine George
Elise Goldberg
Annie Henk
Rebecca Hirade
Linda Igarashi
Jennifer Ikeda
Midori & Morimi Iwama
Daniel Jaquez
David R. Jones
Jeffrey Kargman
Soomi Kim
Peter Koechley
Casey Koh
Christine A. Koyanagi
Sarah Lambert
Jean Lehmberg
Byrd Lochtie
Matthew Loehr
Kate Loewald
Russ Marsden
Farnham Maxwell
Yazmeen Mayes
Carleen McCall
Steven C. McCasland
Brendan N. McNamara
Edelen McWilliams
Joy Adele Meads
Melissa Michaud
KK Moggie
Luis Moreno
Alan Muraoka
Brian Myers Cooper
Thomas Nelis
Oliva Oguma
Deniz Olgac
Maria-Christina Oliveras
Jeffrey Omura
Meropi S. Peponides
Julia Proctor
Bruce Pulmano
Quick Silver Theater Company
Jean Randich
Charlie Read
Attilio Rigotti
Sung Rno
Socorro Santiago
Patricia Savoie

Up to \$99:

Jocelyn Sawyer
Helen Shaw
Paul Slee
Pasquale Toscano

Jacqueline Tralies
Maryellen Tria
Carol Vericker
Richard Waits

Timothy R. Walther
Anne Washburn
Rona M. Wilk

Virginia Wing
Barbie Wu
Felice Yeh

UPCOMING PARTNERSHIPS FOR NAATCO

Fall 2022

Transport Group

2023

Soho Rep

Two River Theatre